



STAINLESS-PRODUCTS.COM

SANITARY & INDUSTRIAL FITTINGS



Stainless Products

1649 72nd Ave. Box 169

Somers, WI 53171

Ph: 800-558-9446 • 262-859-2826 Fax: 262-859-2871

www.stainless-products.com

Table of Contents

Fittings	Pages
Sanitary Weld Fittings	1-4
Sanitary Clamp Fittings	5-12
Industrial Weld Fittings	13-14
John Perry / Bevel Seat Fittings	15-18
Fractional Fittings	19-21
Threaded End Caps and Wrenches	22
Thermometer Ferrules and SP251 Check Valves	23
Clamp/Tube x Pipe Adapters	24
SP484 Line Orifices	25
180 Deg. U-Bend and Special "Y" Elbows	26
Flow Plate Accessories	27
SP250 Screen Tees	28

Contact factory for I-line , Q-Line , 5" , 8" , 10" and 12" fittings.



Stainless Products sanitary fittings meet the standards of 63-04, Authorization # 334.

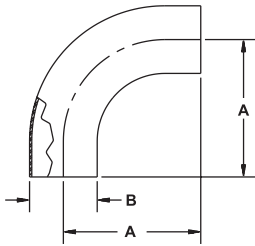
** Bevel Seat fittings are not intended for CIP cleaning. Manual cleaning is required.

** Roll-on fittings are not authorized by 3-A.

Please contact the factory or visit our website to inquire on our complete line of stainless steel flow components.

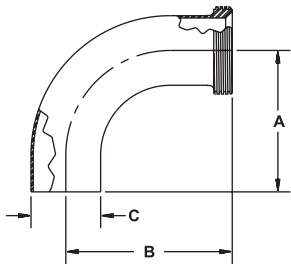
Sanitary Weld Fittings

SP2S - 90 DEG. EL. BUTT-WELD ENDS



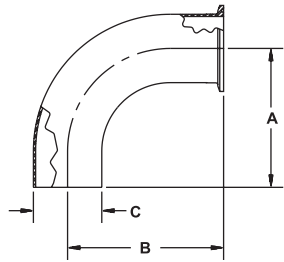
Size	1"	1.5"	2"	2.5"	3"	4"
A	2.06"	2.94"	4.06"	5.31"	6.31"	8.31"
B	1.00"	1.50"	2.00"	2.50"	3.00"	4.00"

SP2T - 90 DEG. EL. 15 x BUTT-WELD



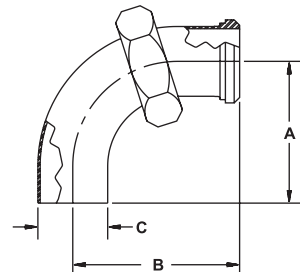
Size	1"	1.5"	2"	2.5"	3"	4"
A	---	2.94"	4.06"	5.19"	6.31"	8.31"
B	---	3.66"	4.78"	6.03"	7.22"	9.53"
C	---	1.50"	2.00"	2.50"	3.00"	4.00"

SP2CW - 90 DEG. EL. SP-CLAMP x BUTT-WELD



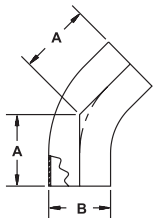
Size	1"	1.5"	2"	2.5"	3"	4"
A	---	2.94"	4.06"	5.19"	6.31"	8.31"
B	---	3.44"	4.56"	5.69"	6.81"	8.94"
C	---	1.50"	2.00"	2.50"	3.00"	4.00"

SP2F - 90 DEG. EL. 13H-14 x BUTT-WELD



Size	1"	1.5"	2"	2.5"	3"	4"
A	---	2.94"	4.06"	5.19"	6.31"	8.31"
B	---	3.66"	4.78"	6.03"	7.22"	9.53"
C	---	1.50"	2.00"	2.50"	3.00"	4.00"

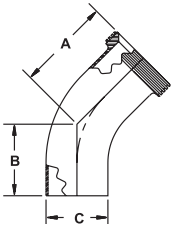
SP2KS - 45 DEG. EL. BUTT-WELD



Size	1"	1.5"	2"	2.5"	3"	4"
A	1.19"	1.63"	2.31"	3.00"	3.69"	4.81"
B	1.00"	1.50"	2.00"	2.50"	3.00"	4.00"

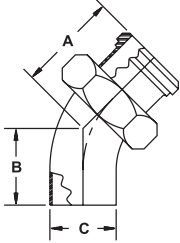
Sanitary Weld Fittings

SP2KT - 45 DEG. EL. 15 x BUTT-WELD



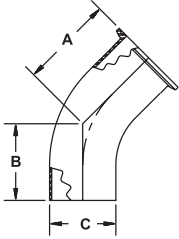
Size	1"	1.5"	2"	2.5"	3"	4"
A	---	2.34"	3.03"	3.84"	4.59"	6.03"
B	---	1.63"	2.31"	3.00"	3.69"	4.87"
C	---	1.50"	2.00"	2.50"	3.00"	4.00"

SP2KP - 45 DEG. EL. 13H-14 x BUTT-WELD



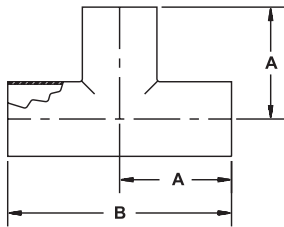
Size	1"	1.5"	2"	2.5"	3"	4"
A	---	2.34"	3.03"	3.84"	4.59"	6.03"
B	---	1.63"	2.31"	3.00"	3.69"	4.81"
C	---	1.50"	2.00"	2.50"	3.00"	4.00"

SP2KCW - 45 DEG. EL. SP-CLAMP x BUTT-WELD



Size	1"	1.5"	2"	2.5"	3"	4"
A	---	2.13"	2.81"	3.50"	4.19"	5.44"
B	---	1.63"	2.31"	3.00"	3.69"	4.81"
C	---	1.50"	2.00"	2.50"	3.00"	4.00"

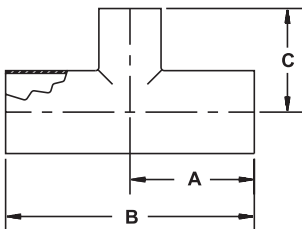
SP7W - BUTT-WELD TEE



Size	1"	1.5"	2"	2.5"	3"	4"
A	1.88"	2.25"	3.00"	3.00"	3.25"	3.88"
B	3.75"	4.50"	6.00"	6.00"	6.50"	7.75"

Available in 32Ra or Unpolished finish

SP7WR - BUTT-WELD REDUCING TEE



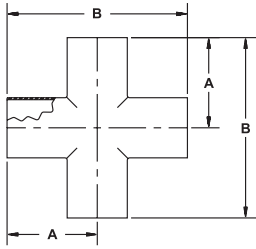
Size	1.5" x 1"	2" x 1.5"	2.5" x 2"	3" x 2"	3" x 2.5"	4" x 3"
A	2.25"	3.00"	3.00"	3.25"	3.25"	3.88"
B	4.50"	6.00"	6.00"	6.50"	6.50"	7.75"
C	2.13"	2.50"	3.25"	3.50"	3.25"	3.75"

Available in 32Ra or Unpolished finish

** Contact Factory for Sizes Not Shown **

Sanitary Weld Fittings

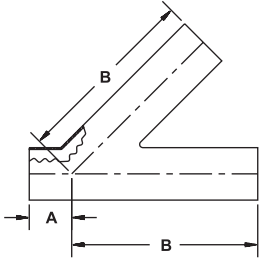
SP9W - CROSS BUTT-WELD



Size	1"	1.5"	2"	2.5"	3"	4"
A	1.88"	2.25"	3.00"	3.00"	3.25"	3.88"
B	3.75"	4.50"	6.00"	6.00"	6.50"	7.75"

Available in 32Ra or Unpolished finish
Contact factory for reducing sizes

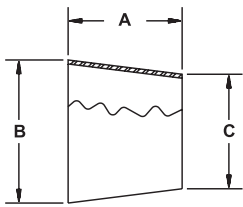
SP28WA - BUTT-WELD LATERAL



Size	1"	1.5"	2"	2.5"	3"	4"
A	1.00"	1.18"	1.63"	1.50"	1.88"	2.06"
B	5.00"	6.19"	7.13"	8.50"	8.88"	10.75"

Available in 32Ra or Unpolished finish
Contact factory for reducing sizes

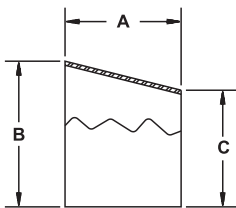
SP31 - CONCENTRIC REDUCER



Size	1.5" x 1"	2" x 1.5"	2.5" x 2"	3" x 2"	3" x 2.5"	4" x 3"
A	2.00"	2.00"	2.00"	4.00"	2.00"	4.00"
B	1.50"	2.00"	2.50"	3.00"	3.00"	4.00"
C	1.00"	1.50"	2.00"	2.00"	2.50"	3.00"

Available in 32Ra or Unpolished finish

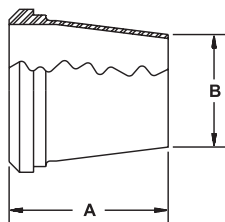
SP32 - ECCENTRIC REDUCER



Size	1.5" x 1"	2" x 1.5"	2.5" x 2"	3" x 2"	3" x 2.5"	4" x 3"
A	2.00"	2.00"	2.00"	4.00"	2.00"	4.00"
B	1.50"	2.00"	2.50"	3.00"	3.00"	4.00"
C	1.00"	1.50"	2.00"	2.00"	2.50"	3.00"

Available in 32Ra or Unpolished finish

SP31PW - CONCENTRIC REDUCER 14 x BUTT-WELD

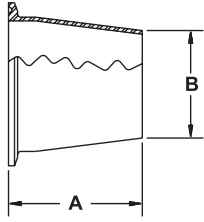


Size	1.5" x 1"	2" x 1.5"	2.5" x 2"	3" x 2"	3" x 2.5"	4" x 3"
A	2.72"	2.72"	2.84"	4.91"	2.91"	5.03"
B	1.00"	1.50"	2.00"	2.00"	2.50"	3.00"

** Contact Factory for Sizes Not Shown **

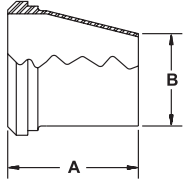
Sanitary Weld Fittings

SP31CW - CONCENTRIC REDUCER SP-CLAMP x BUTT-WELD



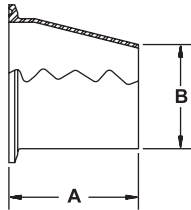
Size	1.5" x 1"	2" x 1.5"	2.5" x 2"	3" x 2"	3" x 2.5"	4" x 3"
A	2.50"	2.50"	2.50"	4.50"	2.50"	4.63"
B	1.00"	1.50"	2.00"	2.00"	2.50"	3.00"

SP32PW - ECCENTRIC REDUCER 14 x BUTT-WELD



Size	1.5" x 1"	2" x 1.5"	2.5" x 2"	3" x 2"	3" x 2.5"	4" x 3"
A	2.72"	2.72"	2.84"	4.91"	2.91"	5.03"
B	1.00"	1.50"	2.00"	2.00"	2.50"	3.00"

SP32CW - ECCENTRIC REDUCER SP-CLAMP x BUTTWELD

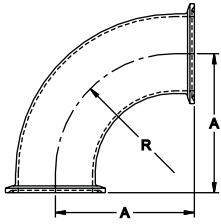


Size	1.5" x 1"	2" x 1.5"	2.5" x 2"	3" x 2"	3" x 2.5"	4" x 3"
A	2.50"	2.50"	2.50"	4.50"	2.50"	4.63"
B	1.00"	1.50"	2.00"	2.00"	2.50"	3.00"

** Contact Factory for Sizes Not Shown **

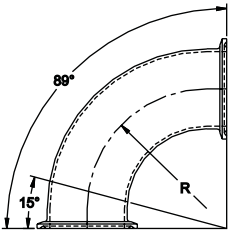
Sanitary Clamp Fittings

SP2C - 90 DEG. EL. BOTH ENDS SP-CLAMP



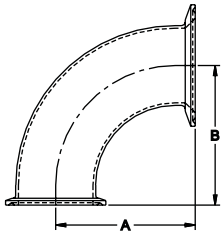
Size	1"	1.5"	2"	2.5"	3"	4"
A	2.00"	2.75"	3.50"	4.25"	5.00"	6.63"
R	1.50"	2.25"	3.00"	3.75"	4.50"	6.00"

SP2CCAE - 90 DEG. EL. CUSTOM ANGLE (MADE TO ORDER)



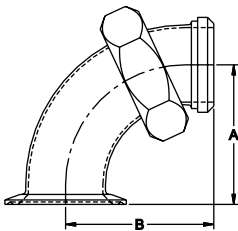
Size	1"	1.5"	2"	2.5"	3"	4"
R	---	2.25	3.00	3.75	4.50	---

SP2C-31 - 90 DEG. EL. BOTH ENDS SP-CLAMP



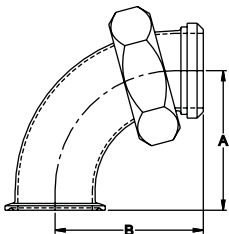
Size	2"x1"	2"x1.5"	2.5"x2"	3"x2"	3"x2.5"	4"x3"
A	2.00"	2.75"	3.50"	3.50"	4.25"	5.13"
B	2.00"	2.75"	3.50"	3.50"	4.25"	5.00"

SP2E-31 - 90 DEG. EL. LARGE END CLAMP / SMALL END 13H-14



Size	2"x1"	2"x1.5"	2.5"x2"	3"x2"	3"x2.5"	4"x3"
A	2.00"	2.75"	3.50"	3.50"	4.25"	5.13"
B	2.19"	2.97"	3.72"	3.72"	4.60"	5.41"

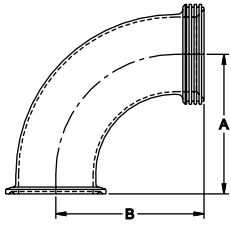
SP2F-14 - 90 DEG. EL. ONE END SP-CLAMP / OTHER END 13H-14



Size	1"	1.5"	2"	2.5"	3"	4"
A	---	2.75"	3.50"	4.25"	5.00"	6.63"
B	---	2.67"	3.72"	4.60"	5.41"	7.03"

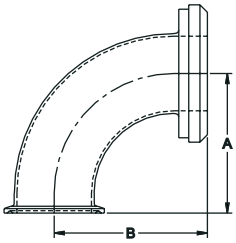
Sanitary Clamp Fittings

SP2F-15 - 90 DEG. EL. ONE END 15 OTHER END SP-CLAMP



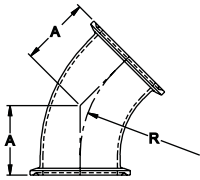
Size	1"	1.5"	2"	2.5"	3"	4"
A	---	2.75"	3.50"	4.25"	5.00"	6.63"
B	---	2.97"	3.72"	4.60"	5.41"	7.03"

SP2F-31 - 90 DEG. EL. LARGE END 14 OTHER END SP-CLAMP



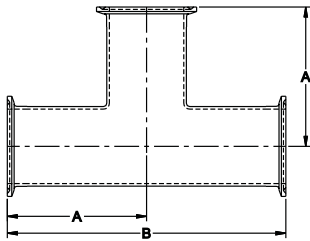
Size	2" x 1"	2" x 1.5"	2.5" x 2"	3" x 2"	3" x 2.5"	4" x 3"
A	2.00"	2.75"	3.50"	3.50"	4.25"	5.00"
B	2.25"	3.00"	3.78"	3.84"	4.59"	5.53"

SP2K - 45 DEG. EL. SP-CLAMP BOTH ENDS



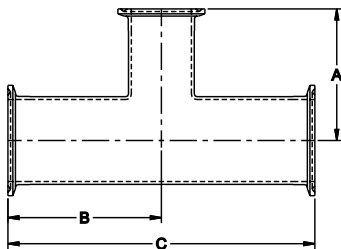
Size	1"	1.5"	2"	2.5"	3"	4"
A	1.13"	1.44"	1.75"	2.06"	2.38"	3.13"
R	1.50"	2.25"	3.00"	3.75"	4.50"	6.00"

SP7 - TEE ALL ENDS SP-CLAMP



Size	1"	1.5"	2"	2.5"	3"	4"
A	2.38"	2.75"	3.50"	3.50"	3.75"	4.50"
B	4.75"	5.50"	7.00"	7.00"	7.50"	9.00"

SP7R- REDUCING TEE ALL ENDS SP-CLAMP

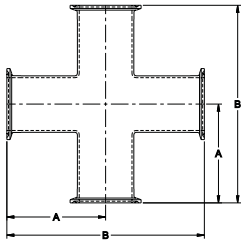


Size	1.5" x 1"	2" x 1.5"	2.5" x 2"	3" x 2"	3" x 2.5"	4" x 3"
A	2.63"	3.00"	3.75"	4.00"	3.75"	4.25"
B	2.75"	3.50"	3.50"	3.75"	3.75"	4.25"
C	5.50"	7.00"	7.00"	7.50"	7.50"	9.00"

** Contact Factory for Sizes Not Shown **

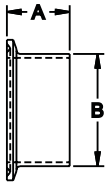
Sanitary Clamp Fittings

SP9 - CROSS ALL ENDS SP-CLAMP



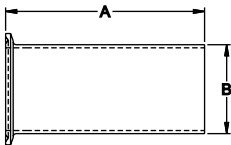
Size	1"	1.5"	2"	2.5"	3"	4"
A	2.38"	2.75"	3.50"	3.50"	3.75"	4.50"
B	4.75"	5.50"	7.00"	7.00"	7.50"	9.00"

SP14A - WELD FERRULE



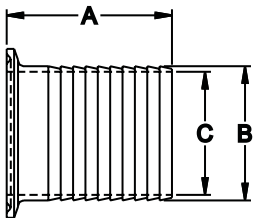
Size	1"	1.5"	2"	2.5"	3"	4"
A	1.13"	1.13"	1.13"	1.13"	1.13"	1.13"
B	1.00"	1.50"	2.00"	2.50"	3.00"	4.00"

SP14AHT - TYGON HOSE ADAPTER



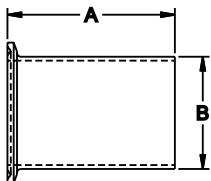
Size	1"	1.5"	2"	2.5"	3"	4"
A	4.50"	4.50"	4.50"	4.50"	4.50"	4.50"
B	1.00"	1.50"	2.00"	2.50"	3.00"	4.00"

SP14AHR - RUBBER HOSE ADAPTER



Size	1"	1.5"	2"	2.5"	3"	4"
A	2.50"	2.50"	2.50"	2.50"	2.50"	2.63"
B	1.00"	1.50"	2.00"	2.50"	3.00"	4.00"
C	.834"	1.33"	1.83"	2.33"	2.83"	3.83"

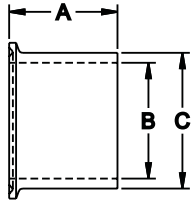
SP14WL - LONG WELD FERRULE



Size	1"	1.5"	2"	2.5"	3"	4"
A	3.00"	3.00"	3.00"	3.00"	4.00"	4.00"
B	1.00"	1.50"	2.00"	2.50"	3.00"	4.00"

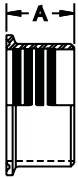
Sanitary Clamp Fittings

SP14W - HEAVY WALL FERRULE



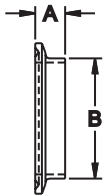
Size	1"	1.5"	2"	2.5"	3"	4"
A	1.63"	1.63"	1.75"	1.75"	1.69"	2.13"
B	.870"	1.37"	1.87"	2.37"	2.87"	3.83"
C	1.16"	1.68"	2.19"	2.71"	3.22"	4.26"

SP14R - ROLL ON FERRULE



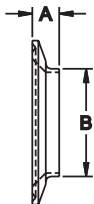
Size	1"	1.5"	2"	2.5"	3"	4"
A	.750"	1.13"	1.19"	1.38"	1.44"	1.50"

SP14SW - SHORT WELD FERRULE



Size	1"	1.5"	2"	2.5"	3"	4"
A	.50"	.50"	.50"	.50"	.50"	.625"
B	1.00"	1.50"	2.00"	2.50"	3.00"	4.00"

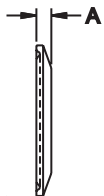
SP14SW-31 - REDUCING SHORT WELD FERRULE



Size	1.5" x 1"	2" x 1.5"	2.5" x 2"	3" x 2"	3" x 2.5"	4" x 3"
A	.50"	.50"	.50"	.50"	.50"	.625"
B	1.00"	1.50"	2.00"	2.00"	2.50"	3.00"

** Contact Factory for Sizes Not Shown **

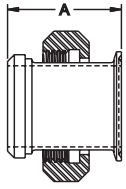
SP16A - SOLID END CAP



Size	1"	1.5"	2"	2.5"	3"	4"
A	----	.25"	.25"	.25"	.25"	.25"

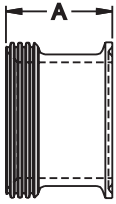
Sanitary Clamp Fittings

SP17PC - SPECIAL ADAPTER 13H-14 x SP-CLAMP



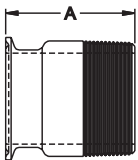
Size	1"	1.5"	2"	2.5"	3"	4"
A	2.50"	2.63"	2.63"	2.88"	2.88"	2.88"

SP17TC - SPECIAL ADAPTER 15 x SP-CLAMP



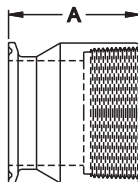
Size	1"	1.5"	2"	2.5"	3"	4"
A	1.69"	1.72"	1.72"	1.84"	1.91"	2.34"

SP21 - ADAPTER MALE NPT x SP-CLAMP



Size	1"	1.5"	2"	2.5"	3"	4"
A	2.25"	2.44"	2.66"	3.19"	3.50"	3.41"

SP22 - ADAPTER FEMALE NPT x SP-CLAMP



Size	1"	1.5"	2"	2.5"	3"	4"
A	1.63"	2.25"	2.34"	2.09"	2.19"	2.63"

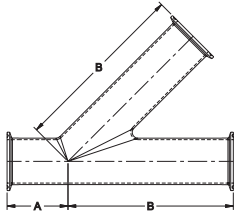
SP23B - THERMOMETER CAP



Size	1"	1.5"	2"	2.5"	3"	4"
A	.50"	.50"	.50"	.50"	.50"	.50"

Sanitary Clamp Fittings

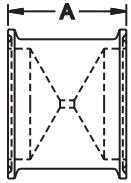
SP28CA - LATERAL "Y" SP-CLAMP ENDS



Size	1"	1.5"	2"	2.5"	3"	4"
A	1.50"	1.69"	2.13"	2.00"	2.38"	2.56"
B	5.50"	6.69"	7.63"	9.00"	9.38"	11.25"

Contact factory for reducing sizes

SP484 - LINE ORIFICE

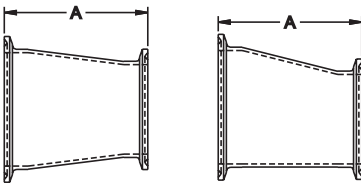


Size	1"	1.5"	2"	2.5"	3"	4"
A	2.00"	2.00"	2.00"	2.00"	2.00"	2.00"

Supplied with 1/8" dia. hole. Contact factory for custom sizes.

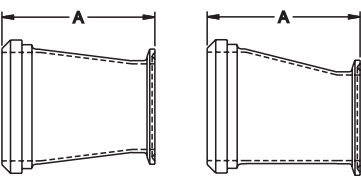
See page 25 for more information

SP31CC and SP32CC SP-CLAMP REDUCERS



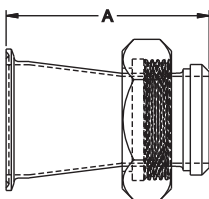
Size	2" x 1"	2" x 1.5"	2.5" x 2"	3" x 2"	3" x 2.5"	4" x 3"
A	5.00"	3.00"	3.00"	5.00"	3.00"	5.13"

SP31PC and SP32PC SP-CLAMP REDUCERS



Size	2" x 1"	2" x 1.5"	2.5" x 2"	3" x 2"	3" x 2.5"	4" x 3"
A	5.22"	3.22"	3.34"	5.34"	3.41"	5.53"

SP31CP REDUCER SP-CLAMP x 13H-14 CONCENTRIC REDUCER

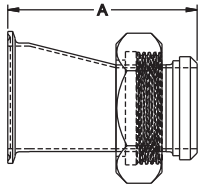


Size	2" x 1"	2" x 1.5"	2.5" x 2"	3" x 2"	3" x 2.5"	4" x 3"
A	6.13"	4.22"	4.38"	6.50"	4.63"	6.47"

** Contact Factory for Sizes Not Shown **

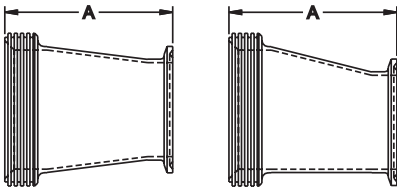
Sanitary Clamp Fittings

SP32CP REDUCER SP-CLAMP x 13H - 14 ECCENTRIC REDUCER



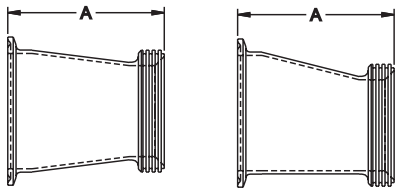
Size	2" x 1"	2" x 1.5"	2.5" x 2"	3" x 2"	3" x 2.5"	4" x 3"
A	6.13"	4.22"	4.38"	6.50"	4.63"	6.47"

SP31TC and SP32TC REDUCERS 15 x SP-CLAMP



Size	2" x 1"	2" x 1.5"	2.5" x 2"	3" x 2"	3" x 2.5"	4" x 3"
A	5.22"	3.22"	3.34"	5.41"	3.41"	5.53"

SP31CT and SP32CT REDUCERS SP-CLAMP x 15

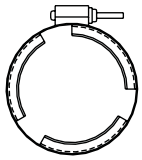


Size	2" x 1"	2" x 1.5"	2.5" x 2"	3" x 2"	3" x 2.5"	4" x 3"
A	5.22"	3.22"	3.34"	5.41"	3.41"	5.53"

** Contact Factory for Sizes Not Shown **

Sanitary Clamp Fittings

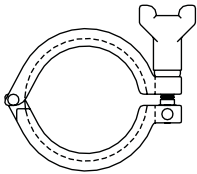
SP13F V INSERT CLAMP



Light Duty Clamp						
PSI Service Rating						
Size	1"	1.5	2"	2.5"	3"	4"
@70°F	100	100	100	100	100	100
@250°F	75	75	75	75	75	75

* Finger Tight

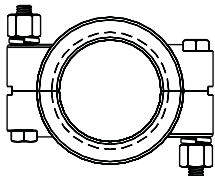
SP13HC HEAVY DUTY CLAMP



Heavy Duty Clamp						
PSI Service Rating						
Size	1"	1.5	2"	2.5"	3"	4"
@70°F	500	500	450	400	350	300
@250°F	300	300	300	200	175	150

* Wing Nut Tightened to 25 in. of torque

SP13HP HIGH PRESSURE CLAMP



High Pressure Clamp						
PSI Service Rating						
Size	1"	1.5	2"	2.5"	3"	4"
@70°F	1500	1500	1000	1000	1000	800
@250°F	1200	1200	800	800	800	600

* Nuts Tightened to 20 in. of torque

Pressure ratings are based on the following: Proper gasket material and ferrules properly aligned. Assembled correctly and tightened to the required torque specifications. ** Note ** Water hammer or line shock is not accounted for in the pressure ratings.

Sanitary Clamp Gaskets

Gaskets are available in sizes 1" thru 4"

SP40 - X SP40E -
X SP40SFY - X
SP40T - X SP40S
- X SP40SFYW - X
SP40W - X

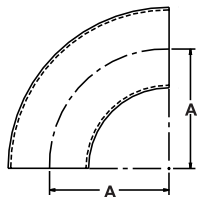
BUNA
EPDM
VITON®
P.T.F.E.
SILICONE
WHITE VITON®
WHITE BUNA

X = SIZE

Viton is a registered trademark of DuPont Elastomers LLC.

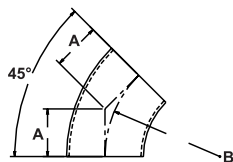
Industrial Weld Fittings

SP2WC - 90 DEG. EL. BUTT-WELD



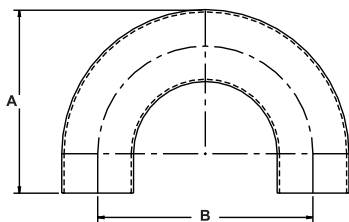
Size	1"	1.5"	2"	2.5"	3"	4"
A	1.50"	2.25"	3.00"	3.75"	4.50"	6.00"

SP2WK - 45 DEG. EL. BUTT-WELD



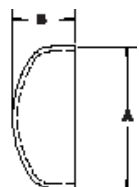
Size	1"	1.5"	2"	2.5"	3"	4"
A	.625"	.938"	1.25"	1.56"	1.88"	2.50"
B	1.50"	2.25"	3.00"	3.75"	4.50"	6.00"

SP2WU - 180 DEG. RETURN BEND



Size	1"	1.5"	2"	2.5"	3"	4"
A	2.00"	3.80"	5.10"	6.10"	7.80"	10.25"
B	3.00"	4.50"	6.00"	7.50"	9.00"	12.00"

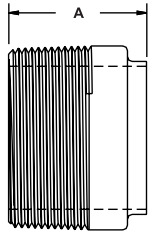
16W - WELD END CAP



Size	1"	1.5"	2"	2.5"	3"	4"
A	1.00"	1.50"	2.00"	2.50"	3.00"	4.00"
B	.375"	1.56"	.750"	1.00"	1.25"	1.50"

Industrial Weld Fittings

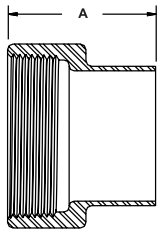
SP19WB - MALE NPT ADAPTER



Size	1"	1.5"	2"	2.5"	3"	4"
A	1.75"	1.75"	1.81"	2.31"	2.50"	2.56"

Contact factory for reducing sizes

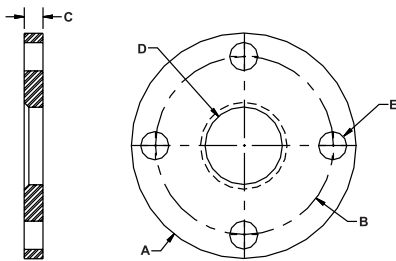
SP22WB - FEMALE NPT ADAPTER



Size	1"	1.5"	2"	2.5"	3"	4"
A	2.44"	2.75"	2.69"	3.38"	3.75"	2.50"

Contact factory for reducing sizes

SP400 PLATE FLANGE

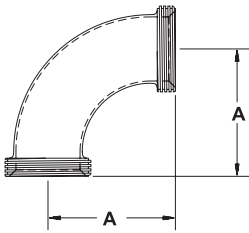


Size	1"	1.5"	2"	2.5"	3"	4"
A	4.50"	5.00"	6.00"	7.00"	7.50"	9.00"
B	3.13"	3.88"	4.75"	5.50"	6.00"	7.50"
C	.500"	.500"	.500"	.500"	.500"	.500"
D	1.03"	1.53"	2.03"	2.53"	3.03"	4.03"
E	.625"	.625"	.750"	.750"	.750"	.750"

All Industrial Weld Fittings are standard "unpolished" finish. Contact factory for 32Ra finish.

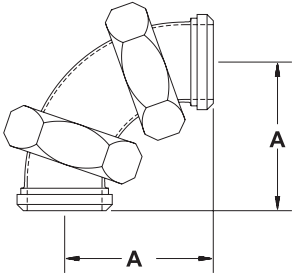
Bevel Seat and John Perry

2C - 90 DEG. EL. BOTH ENDS 15



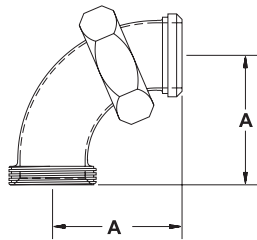
Size	1"	1.5"	2"	2.5"	3"	4"
A	2.18"	2.97"	3.72"	4.59"	5.41"	7.03"

2E - 90 DEG. EL. BOTH ENDS 13H-14



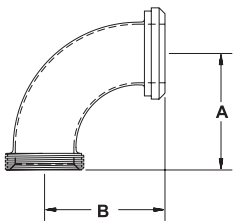
Size	1"	1.5"	2"	2.5"	3"	4"
A	2.18"	2.97"	3.72"	4.59"	5.41"	7.03"

2F - 90 DEG. EL. ONE END 15 x 13H-14



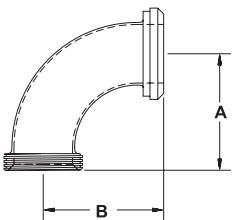
Size	1"	1.5"	2"	2.5"	3"	4"
A	2.18"	2.97"	3.72"	4.59"	5.41"	7.03"

2F -31 90 DEG. EL. SMALL END 15 x LARGE END 13H-14



Size	1.5" x 1"	2" x 1.5"	2.5" x 2"	3" x 2"	3" x 2.5"	4" x 3"
A	2.00"	2.88"	3.72"	3.72"	4.84"	5.91"
B	2.00"	2.91"	3.78"	3.84"	4.84"	5.47"

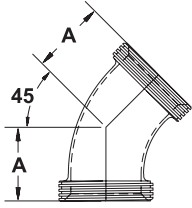
2F - 32 90 DEG. EL. SMALL END 15 x LARGE END 13H-14



Size	1.5" x 1"	2" x 1.5"	2.5" x 2"	3" x 2"	3" x 2.5"	4" x 3"
A	2.00"	2.88"	3.72"	3.72"	4.84"	5.91"
B	2.00"	2.91"	3.78"	3.84"	4.84"	5.47"

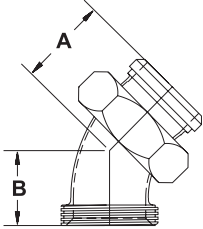
Bevel Seat and John Perry

2K - 45 DEG. EL. BOTH ENDS 15



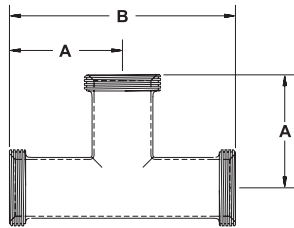
Size	1"	1.5"	2"	2.5"	3"	4"
A	1.31"	1.72"	2.13"	2.63"	3.13"	4.25"

2P - 45 DEG. EL. ONE END 15 x 13H-14



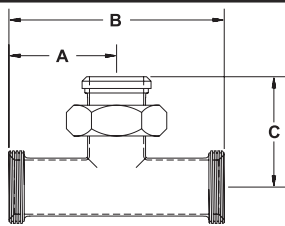
Size	1"	1.5"	2"	2.5"	3"	4"
A	2.13"	2.13"	2.31"	2.56"	2.91"	3.88"
B	1.31"	1.72"	2.13"	2.63"	3.13"	4.25"

7 - TEE ALL ENDS 15



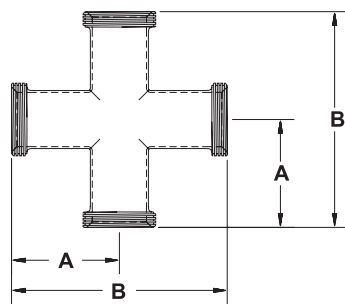
Size	1"	1.5"	2"	2.5"	3"	4"
A	1.81"	2.38"	2.78"	3.19"	3.50"	4.66"
B	3.63"	4.75"	5.56"	6.38"	7.00"	9.31"

7A - TEE TWO ENDS 15 x 13H-14



Size	1"	1.5"	2"	2.5"	3"	4"
A	1.81"	2.38"	2.78"	3.19"	3.50"	4.66"
B	3.63"	4.75"	5.56"	6.38"	7.00"	9.31"
C	2.69"	3.41"	3.81"	4.25"	4.63"	6.13"

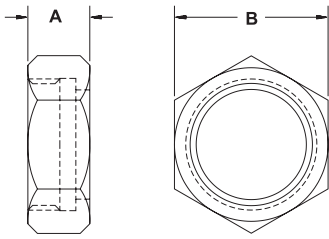
9 - CROSS ALL ENDS 15



Size	1"	1.5"	2"	2.5"	3"	4"
A	1.81"	2.38"	2.78"	3.19"	3.50"	4.66"
B	3.63"	4.75"	5.56"	6.38"	7.00"	9.31"

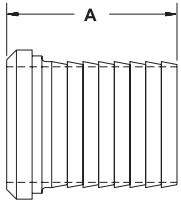
Bevel Seat and John Perry

13H - HEX UNION NUT



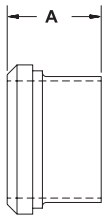
Size	1"	1.5"	2"	2.5"	3"	4"
A	1.81"	2.41"	3.00"	3.60"	4.19"	5.44"
B	.906"	.968"	1.06"	1.19"	1.28"	1.50"

14AHR - RUBBER HOSE ADAPTER



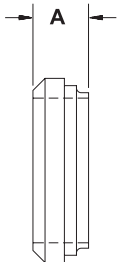
Size	1"	1.5"	2"	2.5"	3"	4"
A	2.68"	2.72"	2.72"	2.84"	2.91"	3.03"

14A - ONE END 14 x BUTT-WELD FERRULE



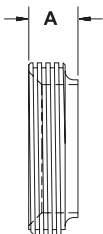
Size	1"	1.5"	2"	2.5"	3"	4"
A	1.38"	1.50"	1.50"	1.75"	1.75"	1.75"

14PS - BUTT-WELD x 14 FERRULE



Size	1"	1.5"	2"	2.5"	3"	4"
A	.688"	.718"	.718"	.844"	.906"	1.03"

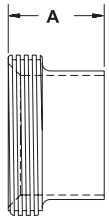
15TS - BUTT-WELD x 15 SHORT FERRULE



Size	1"	1.5"	2"	2.5"	3"	4"
A	.688"	.718"	.718"	.844"	.906"	1.03"

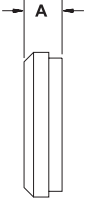
Bevel Seat and John Perry

15A - BUTT-WELD x 15 FERRULE



Size	1"	1.5"	2"	2.5"	3"	4"
A	1.38"	1.50"	1.50"	1.75"	1.75"	1.75"

16A - SOLID END CAP



Size	1"	1.5"	2"	2.5"	3"	4"
A	---	.563"	.625"	.656"	.719"	.813"

Bevel Seat And John Perry Gaskets

Gaskets are available in sizes 1" thru 4"

40BSB - X
 40BSS - X
 JP40 - X
 JP40T - X

BUNA
 P.T.F.E
 BUNA
 P.T.F.E.

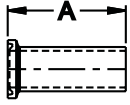
X = SIZE

Note: To Order John Perry fittings add "JP" to the bevel seat number

i.e. 14A becomes a JP14A

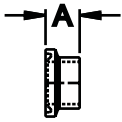
Sanitary Fractional Fittings

SP14A - LONG CLAMP FERRULE



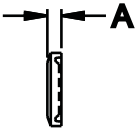
Size	1/2"	3/4"
A	1.75"	1.75"

SP14SW - SHORT CLAMP FERRULE



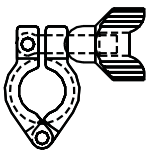
Size	1/2"	3/4"
A	.500"	.500"

SP16A - SOLID END CAP



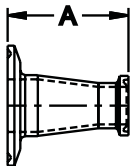
Size	3/4"
Fits 1/2" and 3/4"	

SP13HC - HEAVY DUTY CLAMP



Size	3/4"
Fits 1/2" and 3/4"	

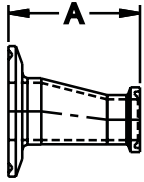
SP31CC - CONCENTRIC REDUCER SP-CLAMP ENDS



Size	3/4" x 1/2"	1" x 1/2"	1" x 3/4"	1.5" x 1/2"	1.5" x 3/4"
A	2.00"	2.50"	2.00"	4.50"	4.00"

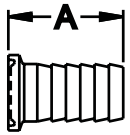
Sanitary Fractional Fittings

SP32CC - ECCENTRIC REDUCER SP-CLAMP ENDS



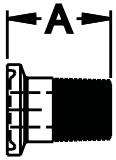
Size	3/4" x 1/2"	1" x 1/2"	1" x 3/4"	1.5" x 1/2"	1.5" x 3/4"
A	2.00"	2.50"	2.00"	4.50"	4.00"

SP14AHR - Rubber Hose Adapter



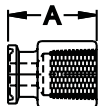
Size	1/2"	3/4"
A	1.50"	1.50"

SP21 - MALE NPT ADAPTER



Size	1/2"	3/4"
A	2.00"	2.00"

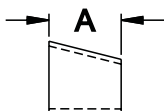
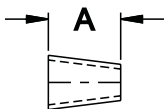
SP22 - FEMALE NPT ADAPTER



Size	1/2"	3/4"
A	1.50"	1.50"

Not 3A

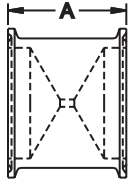
SP31 and SP32 BUTT-WELD REDUCERS



Size	3/4" x 1/2"	1" x 1/2"	1" x 3/4"	1.5" x 1/2"	1.5" x 3/4"
A	1.00"	1.50"	1.00"	2.50"	2.00"

Sanitary Fractional Fittings

SP484 - LINE ORIFICE



Size	1/2"	3/4"
A	2.00"	2.00"

Supplied with 1/8" dia. hole. Contact factory for custom sizes.

See page 25 for more information

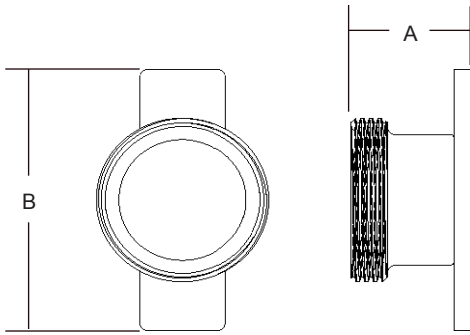
Fractional Gaskets

SP40 - X SP40E -	BUNA
X SP40SFY - X	EPDM
SP40T - X SP40S	VITON®
- X SP40SFYW - X	P.T.F.E. SILICONE
SP40W - X	WHITE VITON®
	WHITE BUNA

X = SIZE

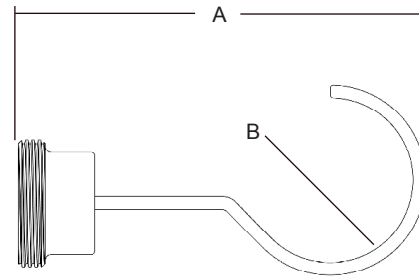
Viton is a registered trademark of DuPont Elastomers LLC.

Threaded End Caps and Wrenches



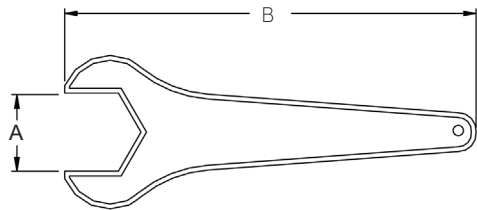
16AT-Threaded Cap

Size	A	B
1"	1.63"	3.00"
1.5"	1.75"	3.00"
2"	1.75"	4.00"
2.5"	2.00"	4.00"
3"	2.00"	5.00"
4"	2.00"	6.00"



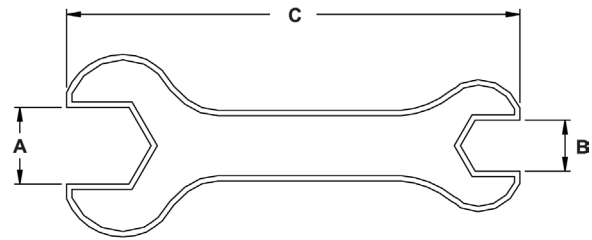
16ATH-Threaded Cap with Hanger

Size	A	B
1"	4.25"	1.00"
1.5"	5.00"	1.50"
2"	5.75"	2.00"
2.5"	6.50"	2.50"
3"	8.00"	3.00"
4"	10.00"	4.00"



25H- Hex Wrench

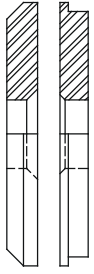
Size	A	B
1.5"	2.44"	13.00"
2"	3.03"	14.25"
2.5"	3.66"	17.50"
3"	4.25"	20.50"
4"	5.44"	23.00"



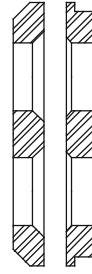
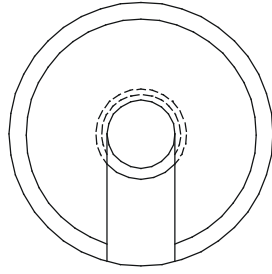
25HA- Double Hex Wrench

Size	A	B	C
2" x 1.5"	3.03"	2.44"	13.63"
2.5" x 2"	3.66"	3.03"	18.00"
3" x 2"	4.25"	4.13"	18.25"

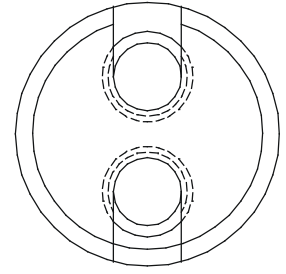
Thermometer Ferrules



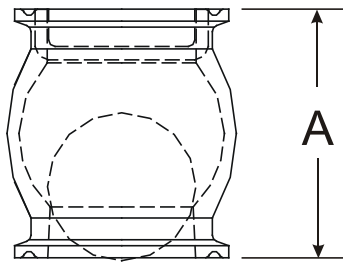
23C-Split Ferrule



23D- Dual Split Ferrule



SP251 Check Valves



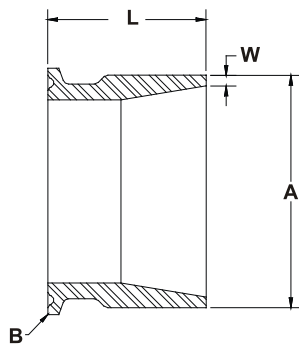
Size	A	Ball Dia.
1.5"	2.312"	1.375"
2"	3.176"	1.875"
2.5"	3.500"	2.375"

Material: SS-T304

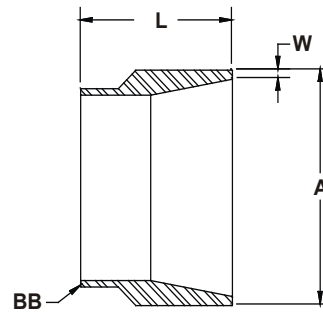
Ball Material :

Nylon

Sanitary Clamp and Tube x Pipe Adapters



SP14AX-H



W14AX-H

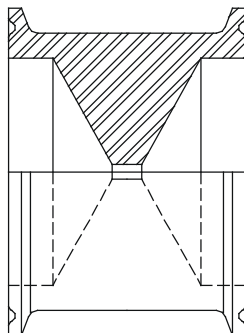
Sch, 10 (AX) are standard

		Clamp Size	Tube Size	Length	Wall
Size	A	B	BB	L	W
T-316L Only for Fractional Sizes					
1/2"	.840"	1/2"	1/2" x .065	1.00"	.083
3/4"	1.050"	3/4"	3/4" x .065	1.00"	.103
Size	A	B	BB	L	W
1"	1.32"	1"	1" x .065	1.63"	0.10
1.5"	1.90"	1.5"	1.5" x .065	1.63"	0.11
2"	2.38"	2"	2" x .065	1.63"	0.11
2.5"	2.88"	2.5"	2.5" x .065	1.63"	0.12
3"	3.50"	3"	3" x .065	1.63"	0.12
4"	4.50"	4"	4" x .083	1.75"	0.12
6"	6.63"	6"	6" x .109	1.75"	0.13
8"	8.63"	8"	8" x .109	1.75"	0.15

Sch.5 (AV) and Sch.40 (AY) adapters are available upon request.

Reducing and Expanding sizes available upon request.

SP484 Line Orifices



Common applications for SP484's are:

- * To create a false head for a centrifugal pump
- * To increase the line pressure
- * To decrease the flow through a line
- * To increase the fluid velocity in a line

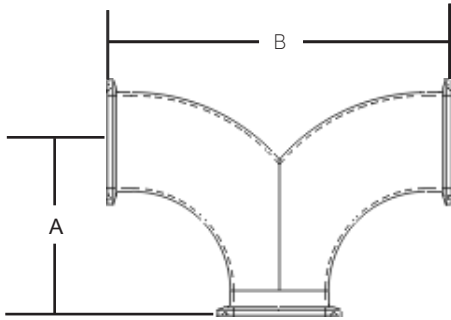
SP484 are available in all sizes 1/2" thru 4". Standard overall length is 2", other lengths are available on request.

1/8" Ø hole standard, other sizes are made to order.
32Ra standard finish, contact factory for other options.
316L only.

Contact Factory if assistance is need for sizing.

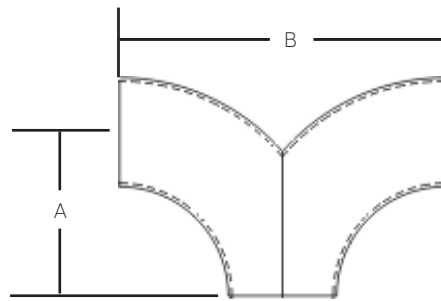
180 Deg. U-Bends and Special "Y" Elbows

SP2YC-Special "Y" Clamp Ends



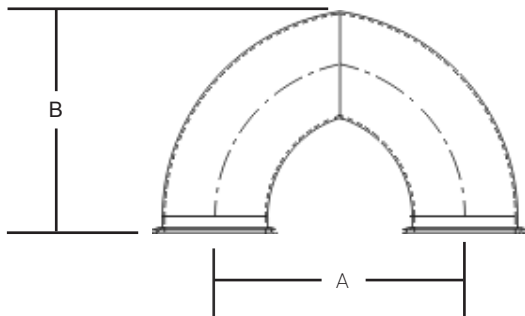
Size	A	B
1.5"	2.75"	5.50"
2"	3.50"	7.00"
2.5"	4.25"	8.50"
3"	5.00"	10.00"
4"	6.62"	13.25"

SP2YW-Special "Y" Weld Ends



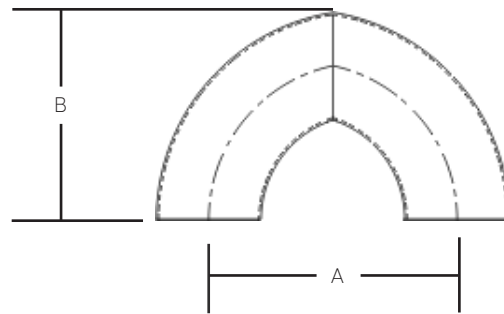
Size	A	B
1.5"	3.25"	4.50"
2"	4.00"	6.00"
2.5"	4.75"	7.50"
3"	5.50"	9.00"
4"	7.00"	12.00"

SP2UC-180° U-Bend Clamp Ends



Size	A	B
1.5"	4.50"	4.305"
2"	6.00"	5.605"
2.5"	6.00"	5.443"
3"	6.00"	6.309"
4 *	9.50"	9.125"

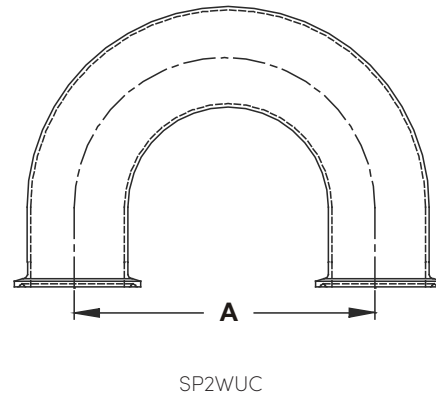
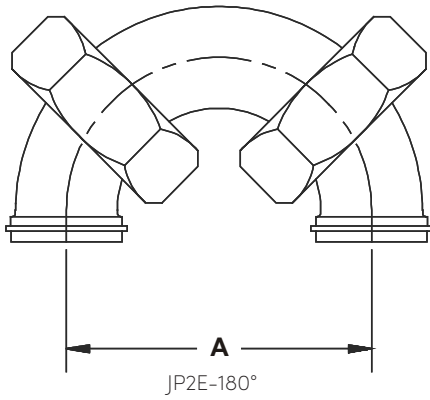
SP2UW-180° U-Bend Weld Ends



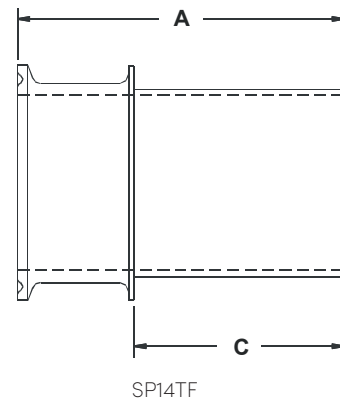
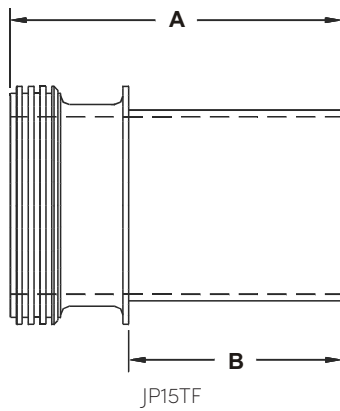
Size	A	B
1.5"	4.50"	3.805"
2"	6.00"	5.105"
2.5"	6.00"	4.943"
3"	6.00"	5.809"
4 *	9.50"	8.625"

* Other center lines available in 4"

Flow Plate Accessories



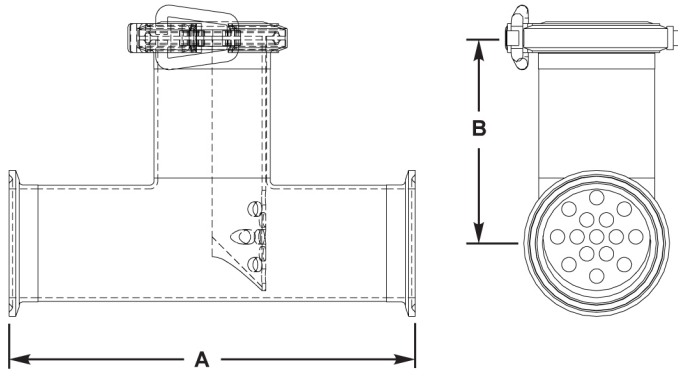
Size	A
1.5"	4.50"
2"	6.00"
2.5"	7.50"
3"	9.00"
4"	12.00"



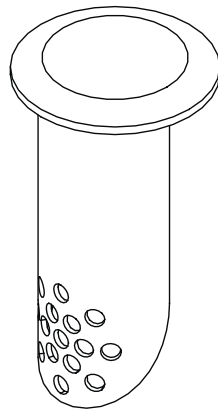
Size	A	B	C
1.5"	3.50"	2.25"	2.25"
2"	3.50"	2.25"	2.25"
2.5"	3.50"	2.25"	2.25"
3"	3.50"	2.00"	2.25"
4"	3.50"	2.00"	2.25"

Contact factory for other end connection options

SP250 Screen Tee



Complete Screen Tee		
Size	A	B
1.5"	5.50"	2.75"
2"	7.00"	3.50"
2.5"	7.00"	3.50"
3"	7.50"	3.75"
4"	9.00"	4.50"



Perforations in screen assembly are 1/4"Ø